

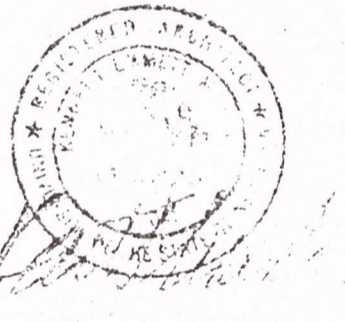
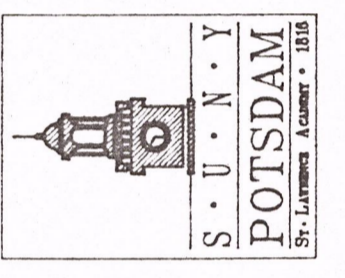
KEY NOTES: CRANE MUSIC COMPLEX

- ① LOCATE IN 38X67 SA DUCT FROM AHU-1; APPROXIMATE LOCATION SHOWN.
- ② LOCATE IN 30X38 VERTICAL RISER - SA FROM AHU-1; APPROXIMATE LOCATION SHOWN.
- ③ LOCATE IN 98X24 VERTICAL RISER - SA FROM AHU-1; APPROXIMATE LOCATION SHOWN.
- ④ LOCATE IN 38X62 VERTICAL RISER; SA FROM AHU-1; APPROXIMATE LOCATION SHOWN.
- ⑤ LOCATE IN 24X36 VERTICAL RISER; SA FROM AHU-1, APPROXIMATE LOCATION SHOWN.
- ⑥ LOCATE IN 108X30 RA DUCT TO AHU-1; APPROXIMATE LOCATION SHOWN.
- ⑦ LOCATE IN 32X28 SA DUCT FROM AHU-2; APPROXIMATE LOCATION SHOWN.
- ⑧ LOCATE IN 28X22 SA DUCT FROM AHU-2; APPROXIMATE LOCATION SHOWN.
- ⑨ LOCATE IN 26X14 SA DUCT FROM AHU-2; APPROXIMATE LOCATION SHOWN.
- ⑩ LOCATE EACH IN 36" SA RISER FROM AHU-2; APPROXIMATE LOCATION SHOWN.
- ⑪ LOCATE IN 80X32 RA DUCT TO AHU-2; APPROXIMATE LOCATION SHOWN.
- ⑫ LOCATE IN 36X22 SA DUCT FROM AHU-3; APPROXIMATE LOCATION SHOWN.
- ⑬ LOCATE IN 30X20 SA DUCT FROM AHU-3; APPROXIMATE LOCATION SHOWN.
- ⑭ LOCATE IN 36X22 SA DUCT FROM AHU-3; APPROXIMATE LOCATION SHOWN.
- ⑮ LOCATE IN 30X20 SA DUCT FROM AHU-3; APPROXIMATE LOCATION SHOWN.
- ⑯ LOCATE IN 38X32 SA DUCT FROM AHU-4; APPROXIMATE LOCATION SHOWN.
- ⑰ LOCATE EACH IN 30" RISER; SA FROM AHU-2; APPROXIMATE LOCATION SHOWN.
- ⑱ LOCATE IN 40X26 RA DUCT TO AHU-3; APPROXIMATE LOCATION SHOWN.
- ⑲ LOCATE IN 44X26 SA DUCT FROM AHU-5; APPROXIMATE LOCATION SHOWN.
- ⑳ LOCATE IN 58X36 SA DUCT FROM AHU-5; APPROXIMATE LOCATION SHOWN.
- ㉑ LOCATE IN 18X28 SA DUCT FROM AHU-5; APPROXIMATE LOCATION SHOWN.
- ㉒ LOCATE IN 24X28 SA DUCT FROM AHU-5; APPROXIMATE LOCATION SHOWN.
- ㉓ LOCATE IN 60X30 RA DUCT TO AHU-5; APPROXIMATE LOCATION SHOWN.
- ㉔ MOTOR CONTROL CENTER; PROVIDE CONTROL MODULES AS FOLLOWS TO SHUT-OFF RESPECTIVE EQUIPMENT ON ALARM. ADDRESSES AS LISTED:

AHU-1 : 10-80	RA-1 : 9-83
AHU-2 : 9-81	RA-2 : 10-83
AHU-3 : 10-81	RA-3 : 9-84
AHU-4 : 9-87	RA-4 : 10-84
AHU-5 : 10-82	RA-5 : 9-85
- ㉕ MAIN EXISTING FIRE ALARM PANEL TO BE REMOVED INCLUDING ALL ANCILLARY EQUIPMENT, WIRING ETC. SEE DETAIL SHEET A23.
- ㉖ NEW TRANSPONDER D; SEE RISER DIAGRAMS FOR DETAILS
- ㉗ EXTEND STROBE CIRCUITS 11,12,13 AND 14 AND HORN CIRCUITS 15 AND 16 INTO TEST AREA FOR FUTURE DEVICES, WIRE DEVICES SHOWN TO RESPECTIVE CIRCUITS.
- ㉘ TERMINATION POINT FOR EXISTING FIBER-OPTIC CABLES; SEE SHEETS S-1 AND A-22; TERMINATIONS MADE AT AT&T, WESTERN ELECTRIC LIGHT GUIDE SYSTEMS MODEL 100A LIU; 48 FIBERS, 12 IN USE; GEL BUFFERED CABLE.

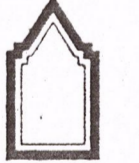
CONTRACTOR SHALL CHECK AND FIELD VERIFY ALL DIMENSIONS AND REPORT DISCREPANCIES TO THE ARCHITECT BEFORE ANY WORK IS COMMENCED.
 ALL DRAWINGS ARE THE PROPERTY OF THE ARCHITECT.
 THIS DESIGN AND THESE DOCUMENTS MAY NOT BE REPRODUCED, REUSED, ALTERED OR ADDED TO WITHOUT THE WRITTEN PERMISSION OF THE ARCHITECT.

STATE UNIVERSITY
 CONSTRUCTION FUND
 SUCF PROJECT NUMBER 12130
 REPLACE FIRE ALARM SYSTEM / INSTALL SPRINKLER
 CRANE MUSIC COMPLEX
 STATE UNIVERSITY COLLEGE AT POTSDAM



HAZF, CONSULTANTS IN ENGINEERING
 P.O. BOX 226
 CLIFTON PARK, NY, 12065
 TEL: (518) 877-8586
 FAX: (518) 877-8599

OCM PROJECT NO. 10233



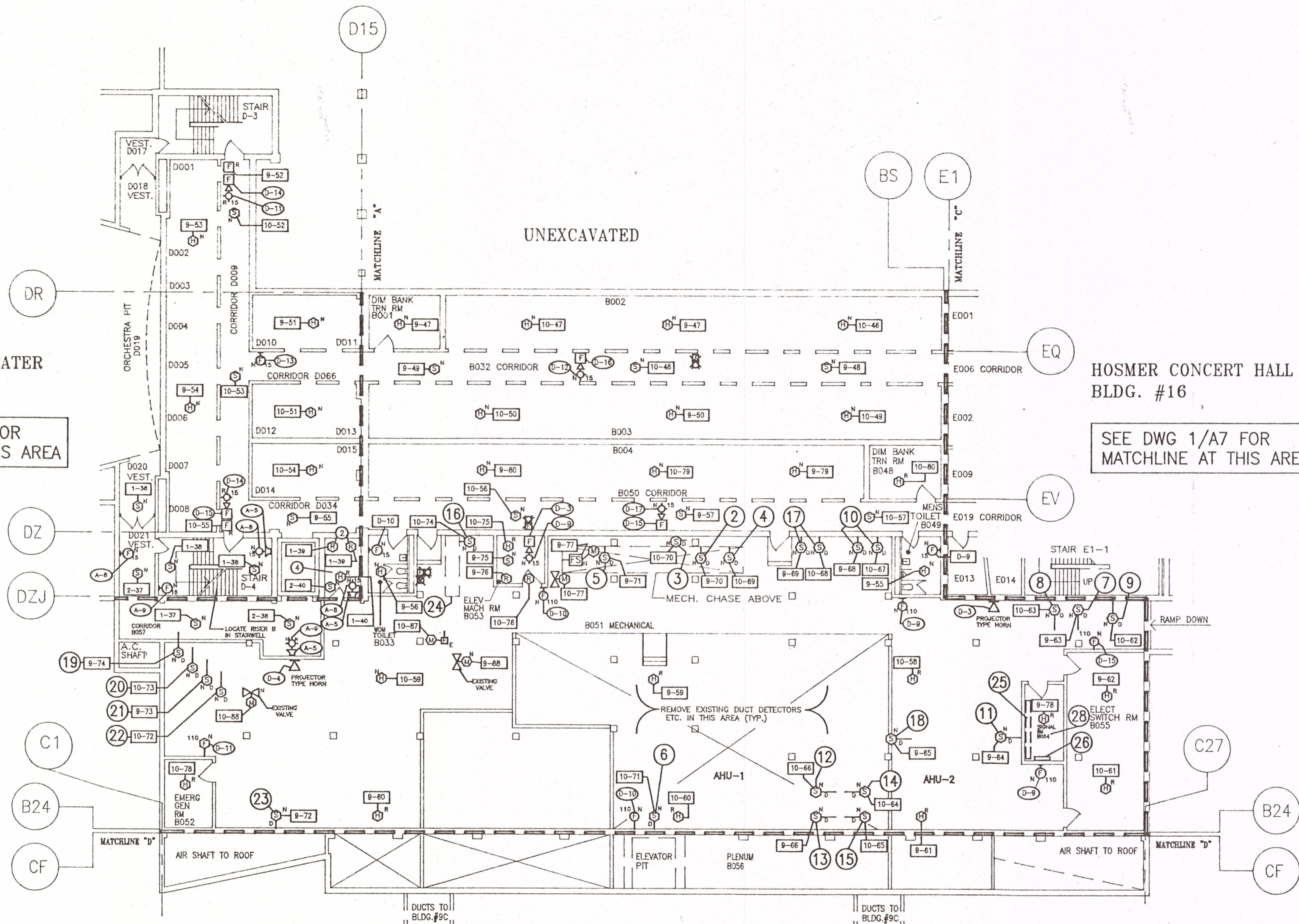
O'CONNOR & MARSH
 ARCHITECTS

FACILITY DESIGN - PLANNING

517 OVER THE LIBRARY
 WESTERN AVENUE
 ALBANY, NEW YORK 12203
 518 459 0611

DRAWING TITLE
 CRANE MUSIC CENTER -
 LEVEL 0

DATE 12-9-97	DRAWING NO. A10
PROJECT NO. 12130	



SNELL MUSIC THEATER
 BLDG. #9D
 SEE DWG 1/A1 FOR
 MATCHLINE AT THIS AREA

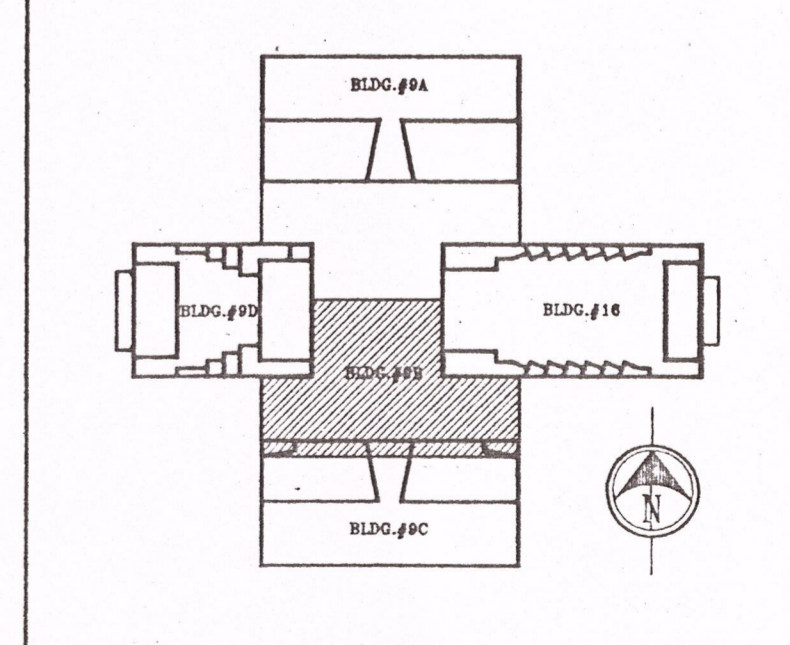
HOSMER CONCERT HALL
 BLDG. #16
 SEE DWG 1/A7 FOR
 MATCHLINE AT THIS AREA

1 BASEMENT PLAN - LEVEL 0
 A10 SCALE: 1/16" = 1'-0"

NOTE:
 SEE DWG 1/A15 FOR SPRINKLER PLAN

DRAWING A-10
 Adden #2
 1/7/98

KEY PLAN: CRANE MUSIC COMPLEX



CRANE MUSIC CENTER (BLDG. #9B)

D116